



(almost) final product...most people preferred to have the handle on the top. Note the strips of wood supporting the plexiglass at the bottom. Those strips came from the cutting of the angle of the top board.





Bottom with 2x2 at base (could be made from two 1x2s).



Attaching window screen (with edges folded over)...on inside of front and top/back boards...with folded side to board. Staples usually needed to be pounded in with a hammer after stapling.



Attaching shelf supports to front board. Note the beveled plexiglass support.



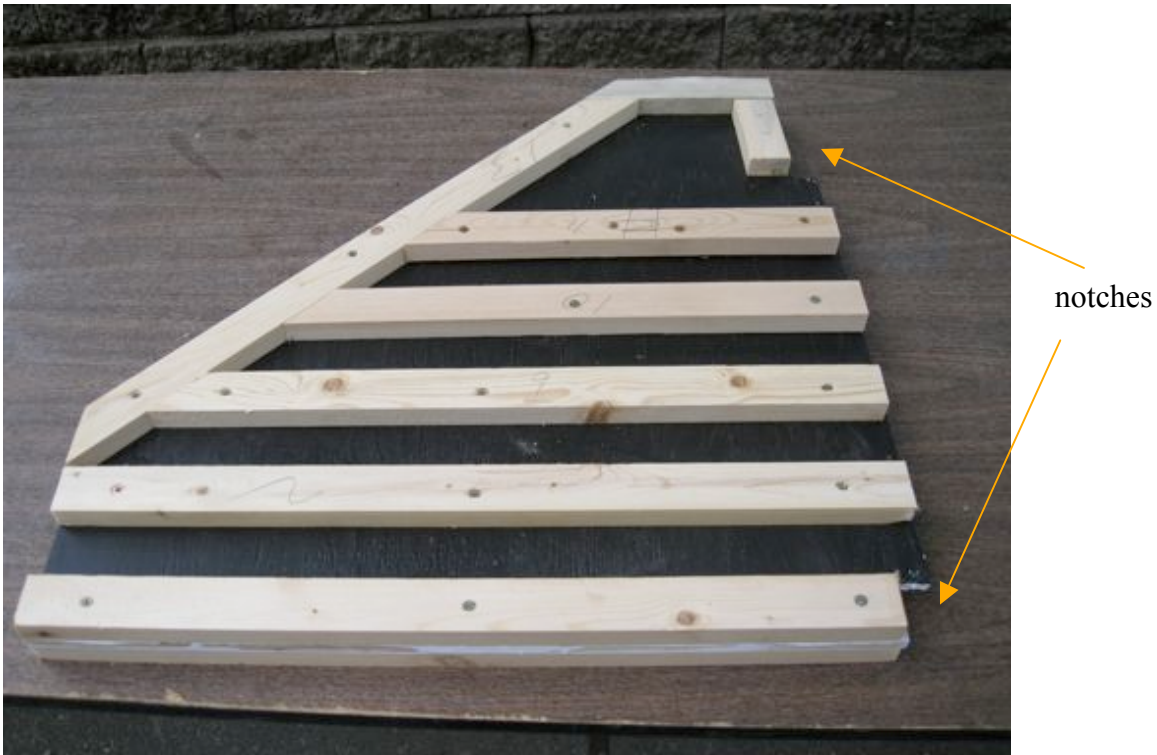
Here's the crew!



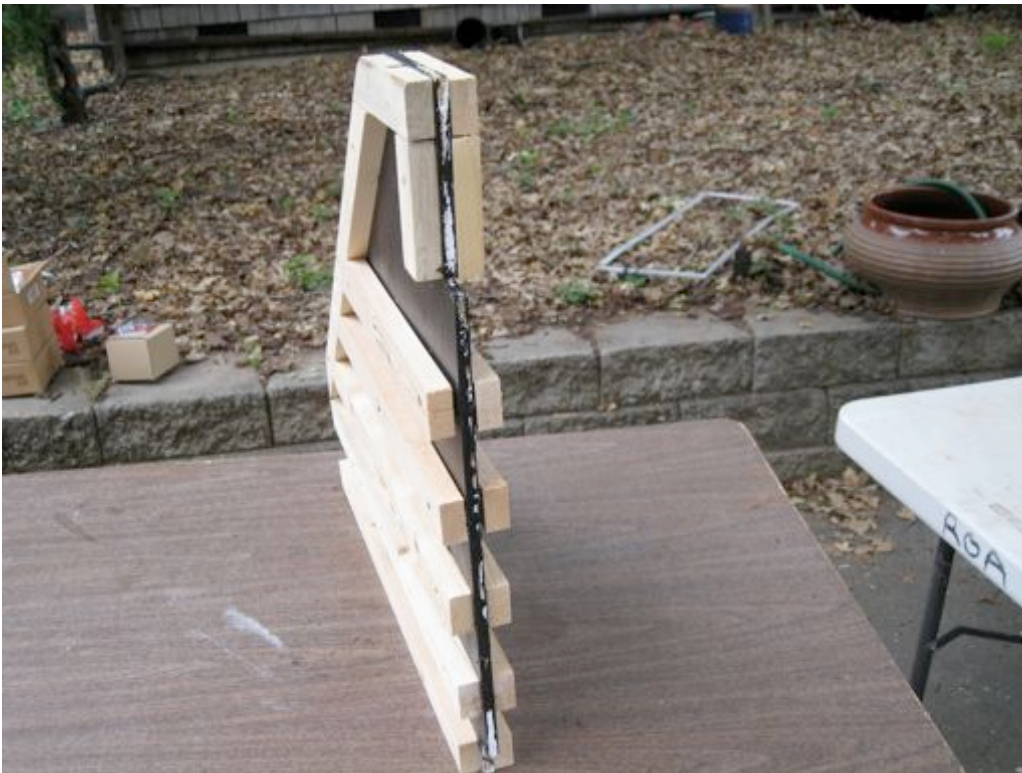
Note that I painted one side of the side pieces before the shelf supports were installed. Also note space for top back board (visible at the upper left of the front dryer.)



Attaching shelf supports. Note 2" wide spacer.



Smaller pieces and holes for screws near the ends should be pre-drilled to reduce splitting.



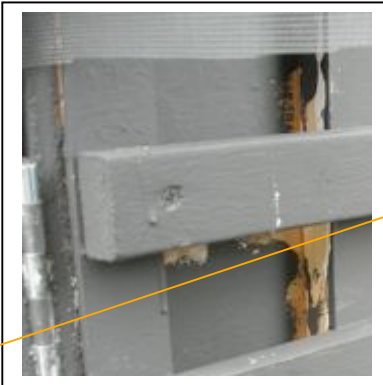
The middle support. The original plywood for the middle piece was the same size as the ends, but since it fits inside, (a) $\frac{3}{4}$ " was cut off for the front (narrow) end and (b) notches were cut at the top and bottom of the back.



Notches required
for these boards

Almost done!

Later I took off the shelf supports from the sides and inserted a scrap of 1x8 between the supports and the side. Then I replaced the shelf supports. (Sometimes when one tries to slide the drying rack/shelf, if it isn't perfectly straight it comes off of the middle support. Inserting the scrap is intended to keep the shelf from getting crooked.)



Note that doors are
attached to a 1" strip
of plywood cut from
the back piece. Note
also that the hinges are
set back so that the
shelves can be inserted
without hitting the
open door.



Screen drying racks/shelves in place. The left and right sides of the dryer may be slightly different in width, so I labeled which shelf fits where.

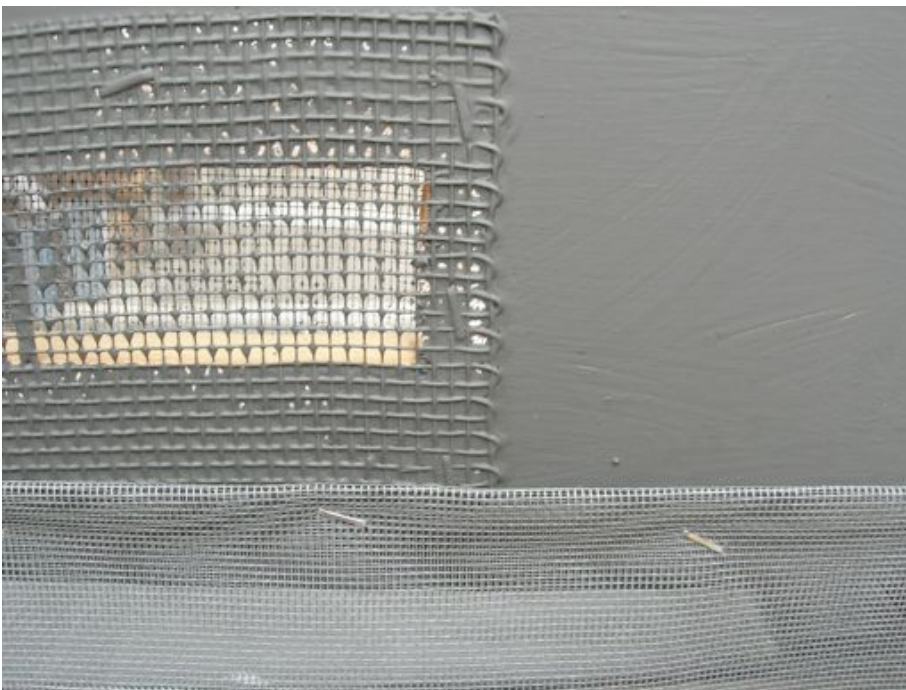


Door must be attached in such a way that when it is open, it doesn't interfere with sliding the shelves in.

Fiberglass screen added to help keep insects from coming in from back. Shown here draped over the top.



Fiberglass screen in place, ready to close the doors.



Detail showing: (1) attachment of hardware cloth over vent and (2) attachment of fiberglass screen at back of the dryer. Note that the fiberglass is folded over before stapling to provide more strength.



Closed doors. Since we made the doors out of a 3' wide piece, and then cut the piece 3 times, a gap was created. We used scraps to provide an overlap to close the gap. Note handles...most people preferred the handles on top.



1" wide strips of wood hold the plexiglass in place. Strips cut to size, placed on plexiglass, then the strip and plexiglass were drilled with a sharp bit to allow for screw to attach to the 1x2 strips on the sides and middle. Drill only until through the plexiglass so that the screw has wood to screw into.



Finished product.